

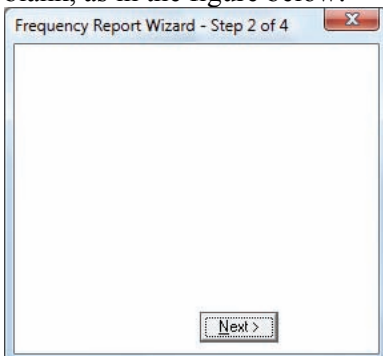
Technical note - Installing PSW 2 on Windows Vista

This technical note explains how get PSW 2 to work on Windows Vista.

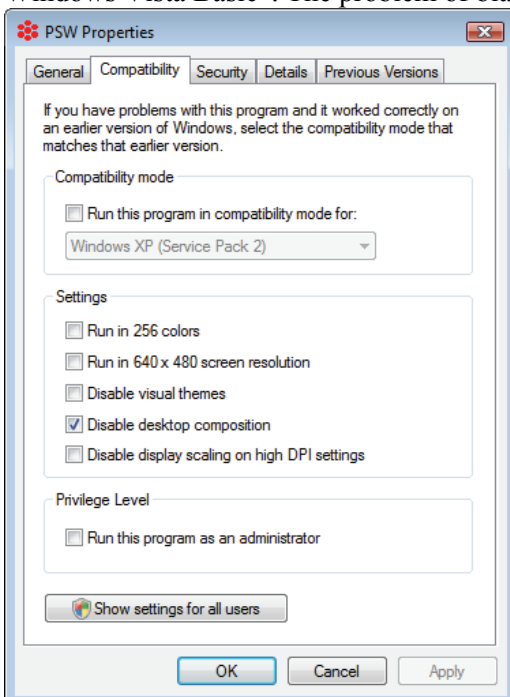
Note! If you are using Aten's USB-to-Serial converter UC232a, you need to download and install the latest Vista-compatible driver (released 2007-7-10) from Aten's website: <http://www.aten.com/>. First install the driver on the computer, and then connect the adapter to a USB port. Windows will automatically complete the driver installation.

Blank dialogs in the Report Wizard

One known problem with PSW 2 and Windows Vista is that some dialogs in the report wizard turn up blank, as in the figure below:

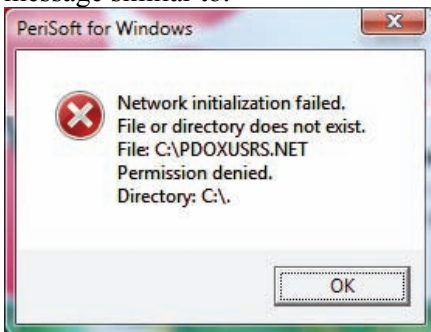


To solve this problem, close PSW and then right-click on the PSW desktop shortcut (or the exe file). On the Compatibility tab, see figure below, check the option "Disable desktop composition" and click OK. The next time you start PSW, Windows displays a message saying "The color scheme has been changed to Windows Vista Basic". The problem of blank dialogs should now be solved.



Installation and setting up the BDE Administrator

Another known problem is that sometimes PSW will not start at all after installation and you get an error message similar to:



The solution is described below together with an instruction on how to install PSW; because of issues having to do with user permissions, we recommend that you install in a folder created by yourself, and not in the default location Program Files. Note that you need to be logged on as administrator.

Installation

1. Create a new folder on your local hard disk and name it for example "PSW 2".
2. Right-click on the folder, select *Properties* and click on the *Security* tab, see figure 1. Select a user on the list, and under "Permissions", make sure the option *Full control* is checked. You need to do this for each user who will run PSW on a particular computer. If a user does not have full permissions then change it.

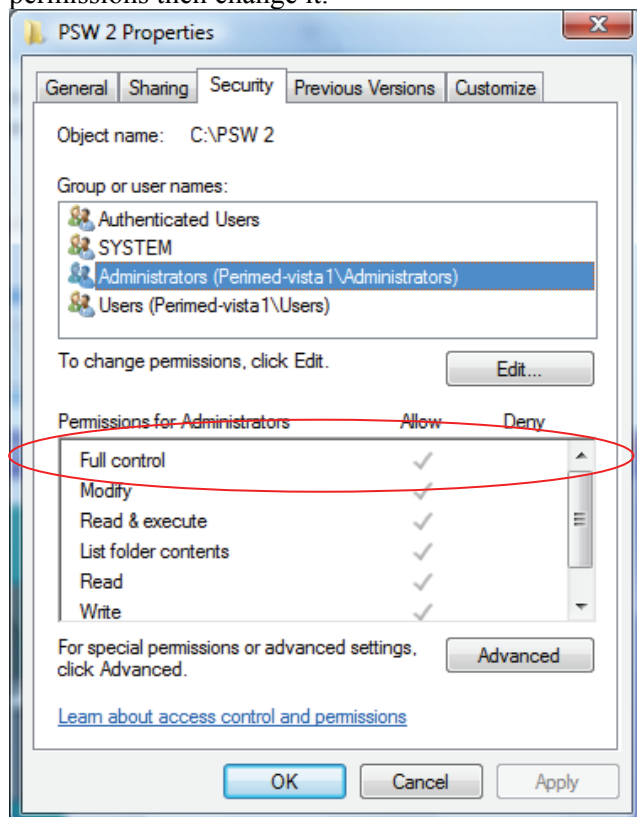


Figure 1

- Next, start the PSW installation program as usual. Select the newly created folder “PSW 2” as installation folder, see figure 2.

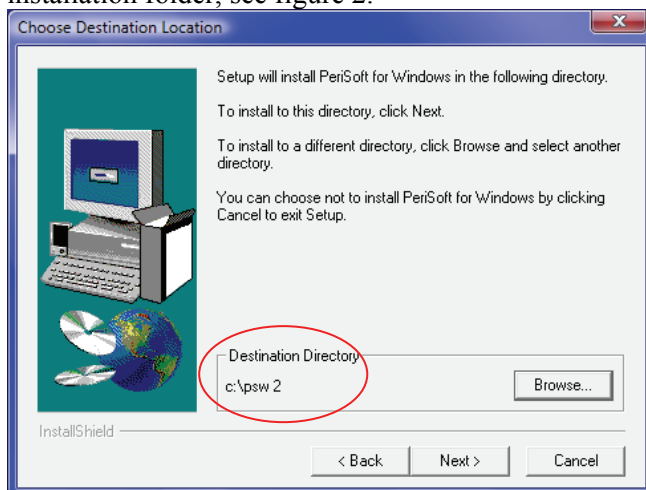


Figure 2

Changing NET DIR in BDE Administrator

- When the installation is complete, open the Control Panel and double-click on BDE Administrator (visible only after PSW installation is complete), see figure 3.

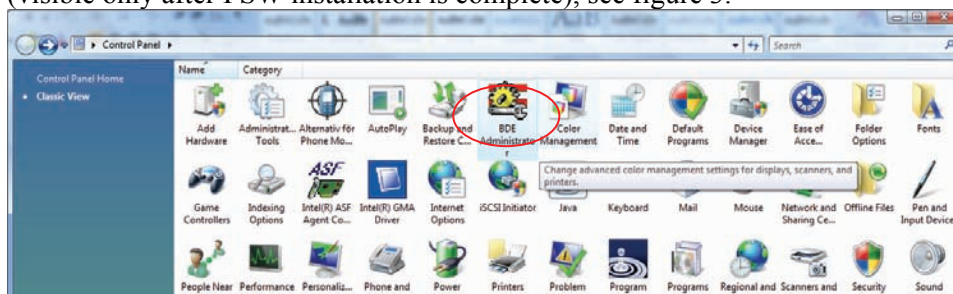


Figure 3

- Click on the *Configuration* tab, see figure 4, and then on *Drivers | Native | Paradox*. Change “NET DIR” to “PSW 2”.

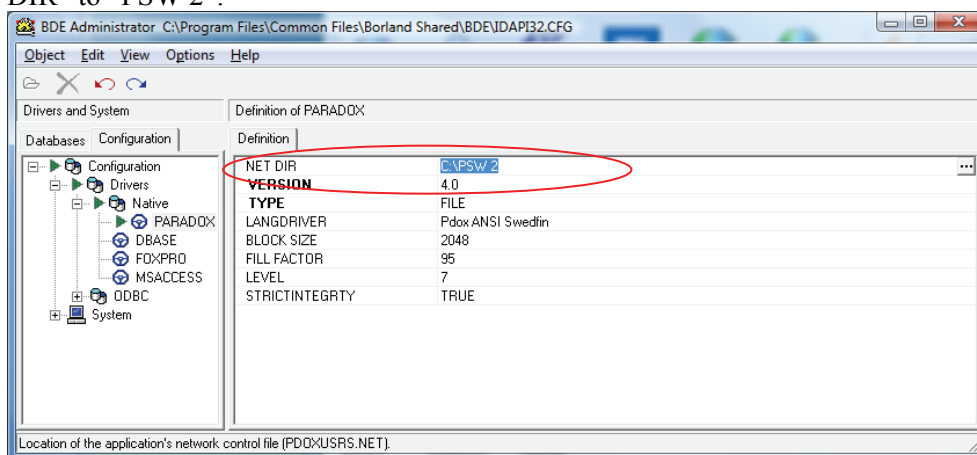


Figure 4

- Still in BDE Administrator, select “Save As configuration” on the Object menu (if this option is not available, exit the menu, go to the *Databases* tab, and try selecting “Save As Configuration” from the Object menu again).

- Browse to the folder “PSW 2” and name the file “IDAPI32.CFG” as in figure 5.

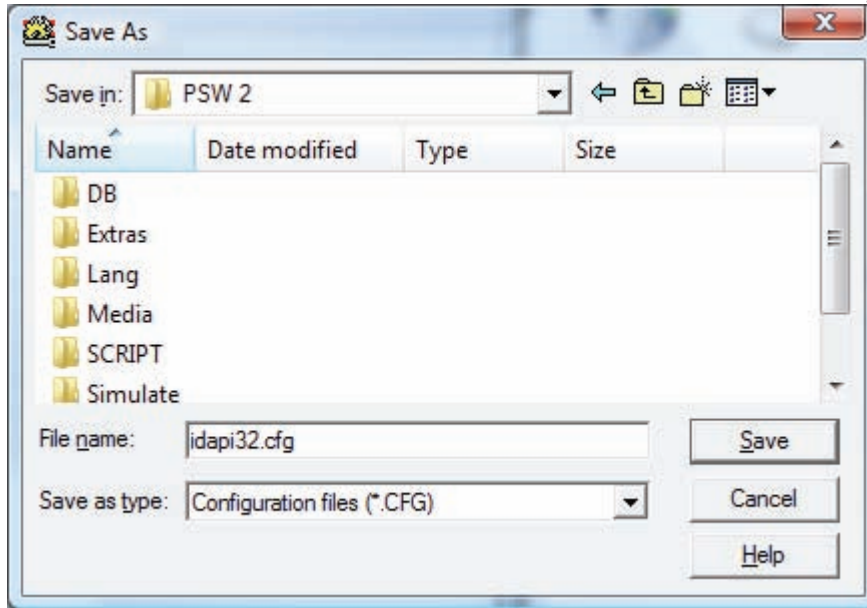


Figure 5

- Click *Yes* in the “Apply current configuration changes” dialog and close BDE Admin.

Note! It may be necessary to repeat steps 4-8 for each user.

- Start PSW. Things should work.